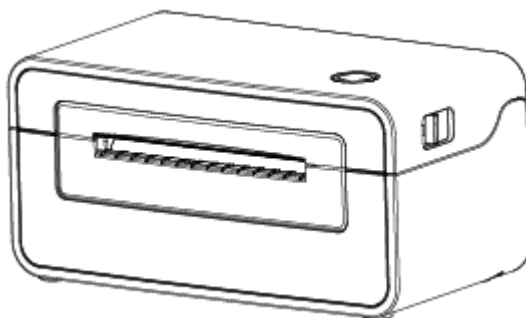




*Let Things Better,
Faster and Vital*

SP410



User Manual

Xiamen Hanin Electronic Technology Co., Ltd.

ADD: 5F, 8#, Aide Airport Industrial Park, Huli District, Xiamen, China

Web: www.idprt.com

CONTENT

Chapter 1 Introduction	1
1.1 Packing List	1
1.2 Appearance and Components	2
Chapter 2 Installation & Usage	3
2.1 Media Loading	3
2.2 Power Connection	7
2.3 Operation Panel	8
CHAPTER 3 WINDOWS DRIVER INSTRUCTION	9
3.1 Installation Preparation	9
3.2 Installation	9
3.3 Usage	12
3.4 Removing	25
CHAPTER 4 MAC DRIVER INSTRUCITON	27
4.1 Driver Preparation for macOS	27
4.2 Driver Installation for macOS	27

CHAPTER 1 INTRODUCTION

1.1 Packing List

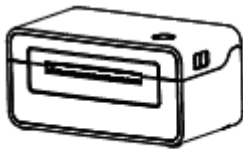


Note:

1.Unpack the printer and keep the packing materials in case you need to ship the printer in the future.

2.Any damages exist, please contact the local dealer.

■ Standard



Printer



Power Cord



CD

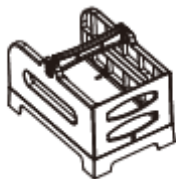


USB Cable



Quick Start Guide

■ Optional



Folding Paper Storage



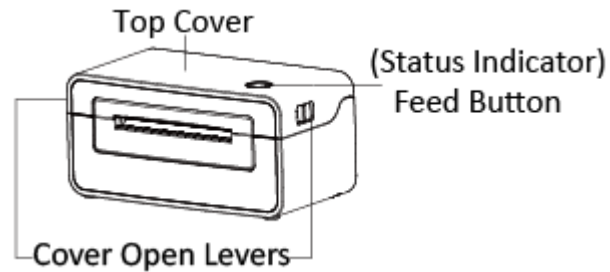
External Paper Roll Holder



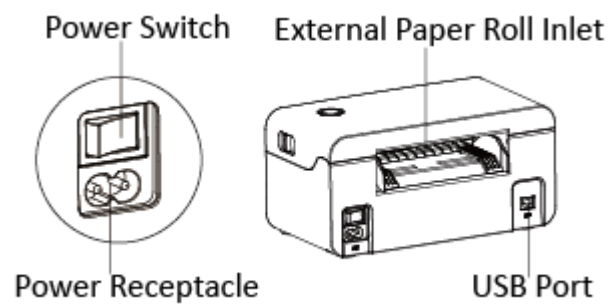
Note: The packing materials are based on the order.

1.2 Appearance and Components

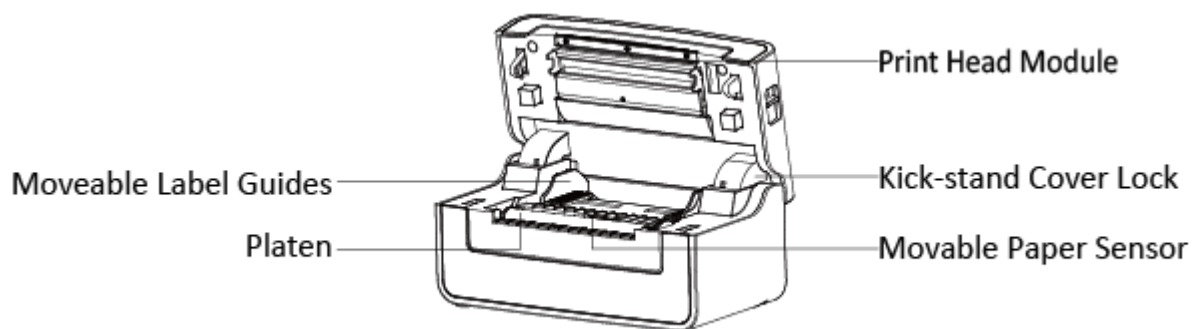
■ Front View



■ Rear View



■ Inside View



Note: The views above are for your reference. Ports vary by your choice.

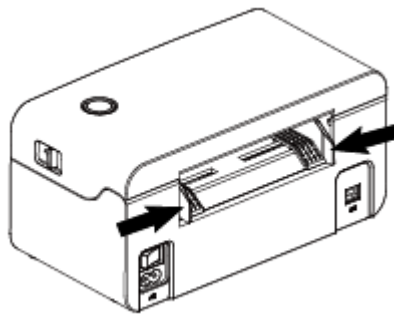
CHAPTER 2 INSTALLATION & USAGE

2.1 Media Loading

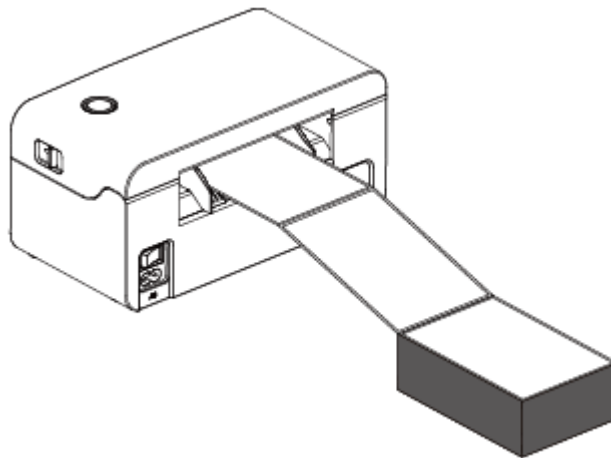
2.1.1 Paper Roll Loading

■ Folding Paper Loading

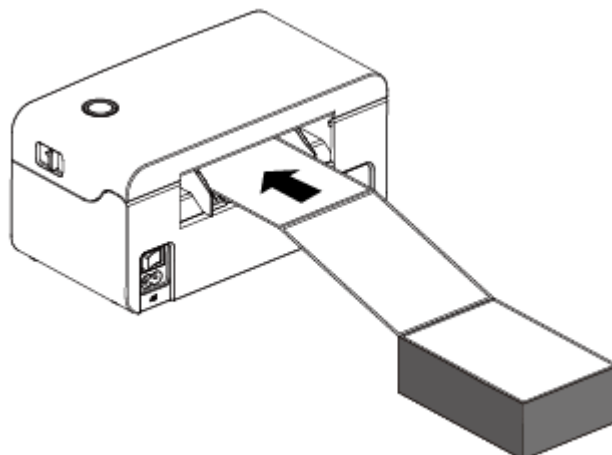
1. Turn the power on, adjust the paper guides to fit the width of paper.



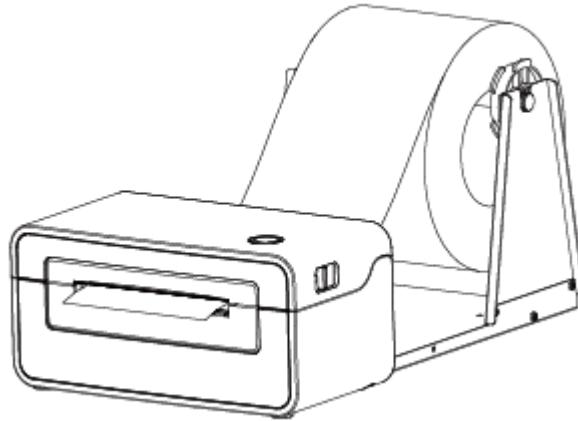
2. Insert the paper into the entry slot.



3. The paper will be inhaled into the path automatically.



■ External Paper Roll Loading

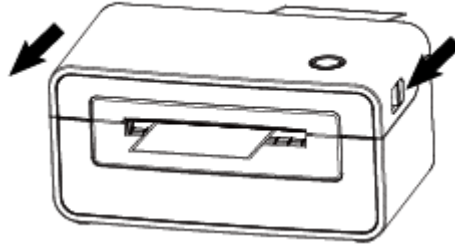


NOTE:

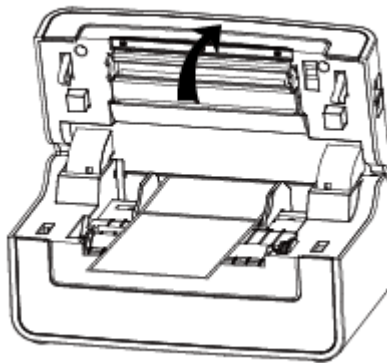
- 1) When the printer is power on, the paper will be inhaled into the path automatically.
- 2) The external paper roll holders need to be aligned with the hooks at the bottom of the printer.

2.1.2 Paper Jam

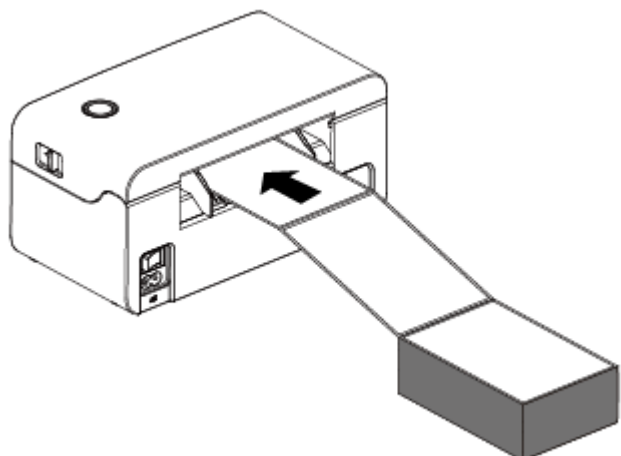
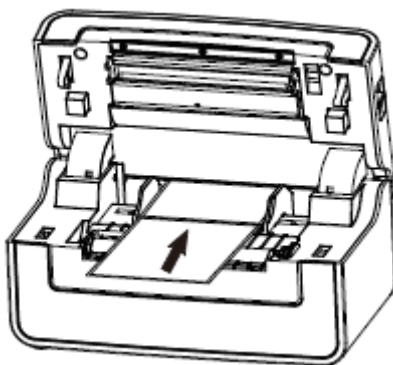
1. Press the cover open levers and hold upwards.



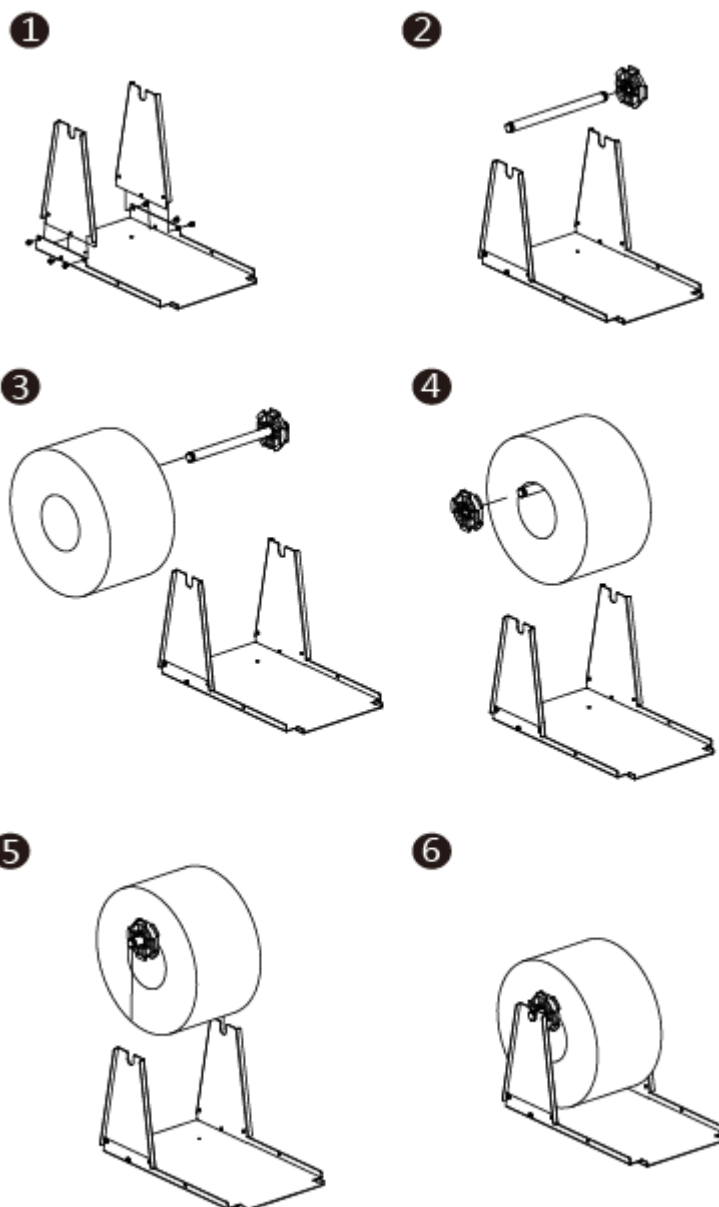
2. Open the printer cover.



3. Take out the jammed paper, then clean up the print head and platen, then reload a new paper.

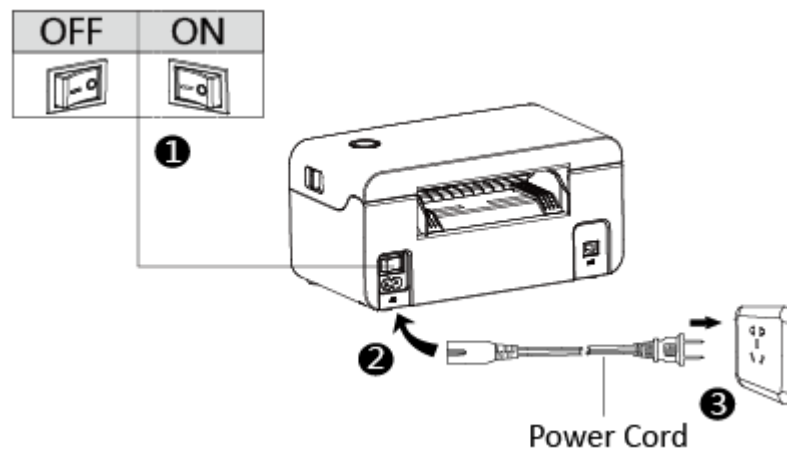


2.1.3 Loading the external paper roll



2.2 Power Connection

1. Make sure the printer's power switch is in the off position.
2. Connect the power cord to printer.
3. Connect the other end of power cord to the outlet.



NOTE:

1. Use the original power adapter only, in case that the damage caused by charging improperly.
2. Please unplug the printer power cord if it is not in use for a long time.

2.3 Operation Panel

1.Feed Button:

■ Turn on

In the shutdown state, turn on the power switch behind the printer, then the indicator will be light on.

■ Turn off

When the power switch is turned off, the printer shuts down and the indicator light is off. In the power-on state, turn off the power switch behind the printer, then the indicator will be light off.

■ Feed Button

1) Press the feed button, the printer sends the paper out to the specified position depending on the type of paper used. When using continuous paper, long press the feed button to send a fixed length of paper. if using label paper, press the feed button once that will send out a whole label.

2) When the printer is printing, press the feed button to pause the current printing and the light is green. press the button again to print the unfinished print task.

2.Description of indicator status:

Color	Action	Indicator Status
Blue	Keep Bright	Ready
Blue	Slow flash	Dump mode
Purple	Keep Bright	Overheat of print head
Red	Keep Bright	Head up
Red	Slow flash	Paper out
Red	Quick flash	Abnormal label calibration
Orange	Slow flash	Paper jam, Label positioning is abnormal
Green	Keep Bright	Printing
Green	Slow flash	Pause of printing

CHAPTER 3 WINDOWS DRIVER INSTRUCTION

3.1 Installation Preparation

Download Windows Driver application program in CD.

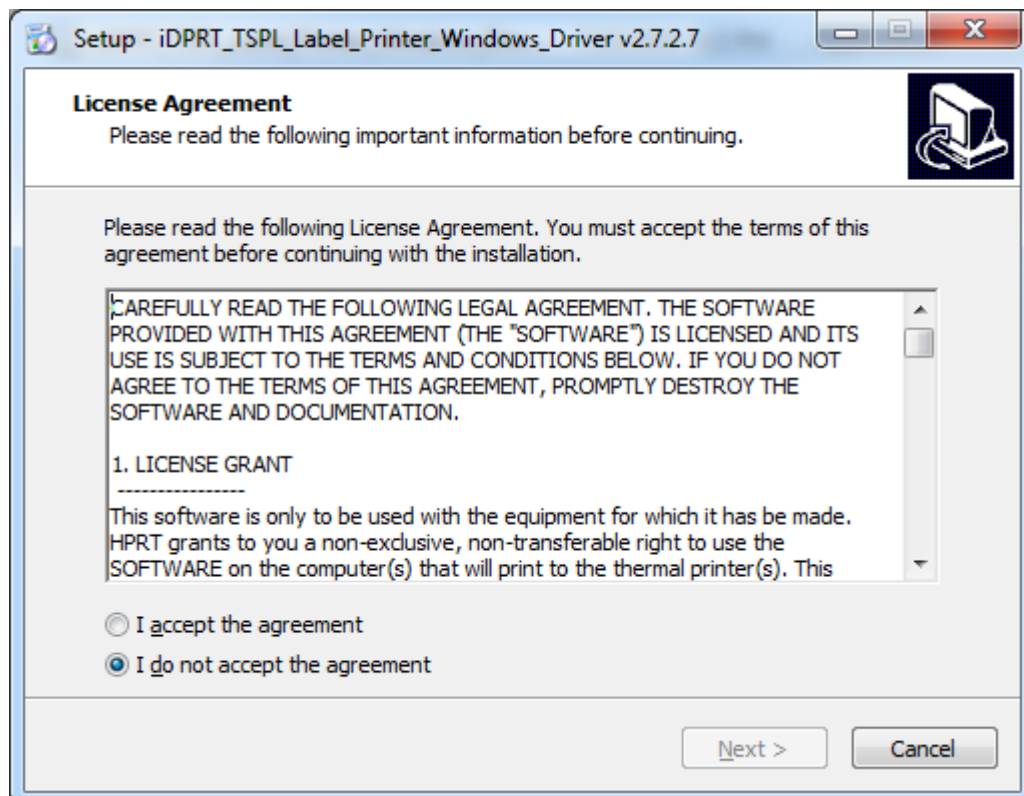
E.g. iDPRT Label Printer Driver-v-2.7.2.7

3.2 Installation

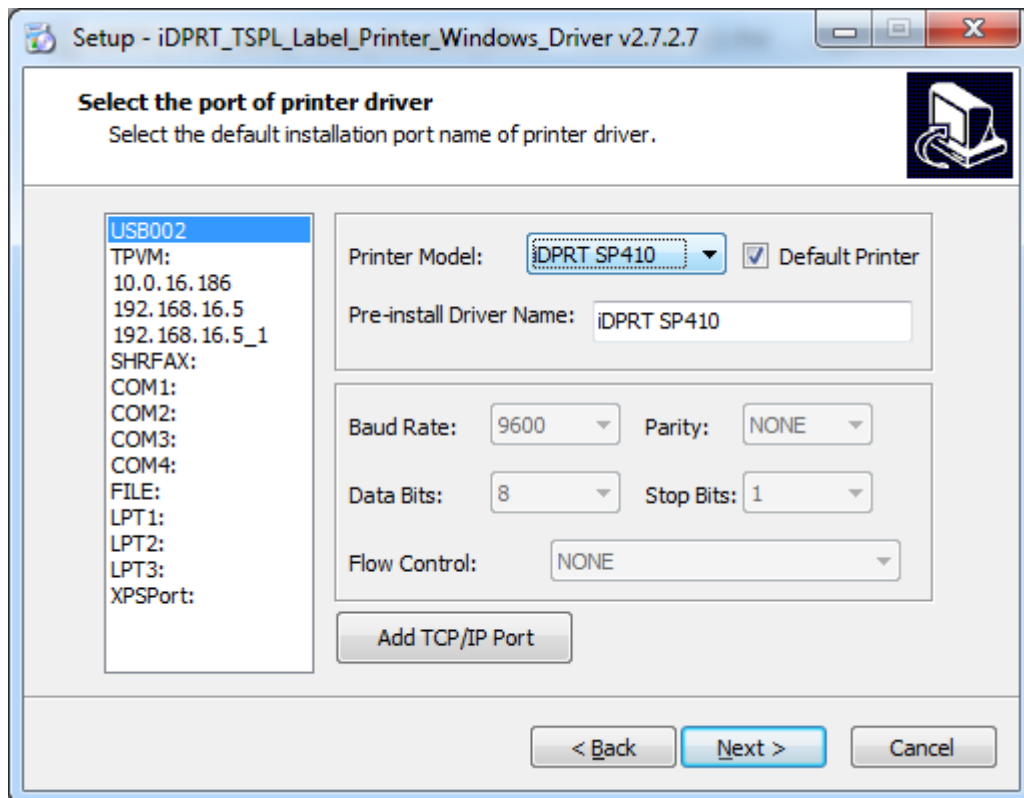


Warning: There are some differences under different operating system. Please operate it according to the tips. Recommend to close security software before installation in case of preventing installation.

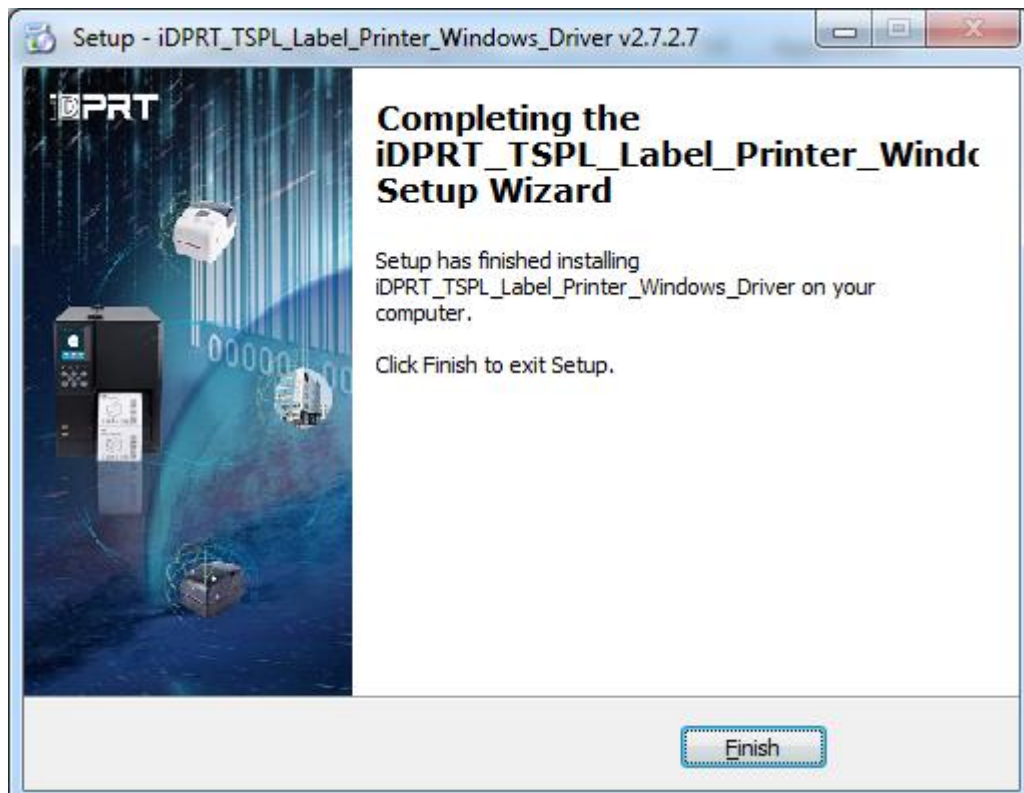
1. Select one interface to connect your printer to computer.
2. Turn on the printer and check if it is connected to computer successfully.
3. Double click Windows Driver.
4. Read and agree the license agreement. Then click "Next".



5. Select the default installation port name of printer driver, then click "Next".



6. Click "Finish".



7. After installation, the icon will be found in “Start” → “Devices and Printers”.



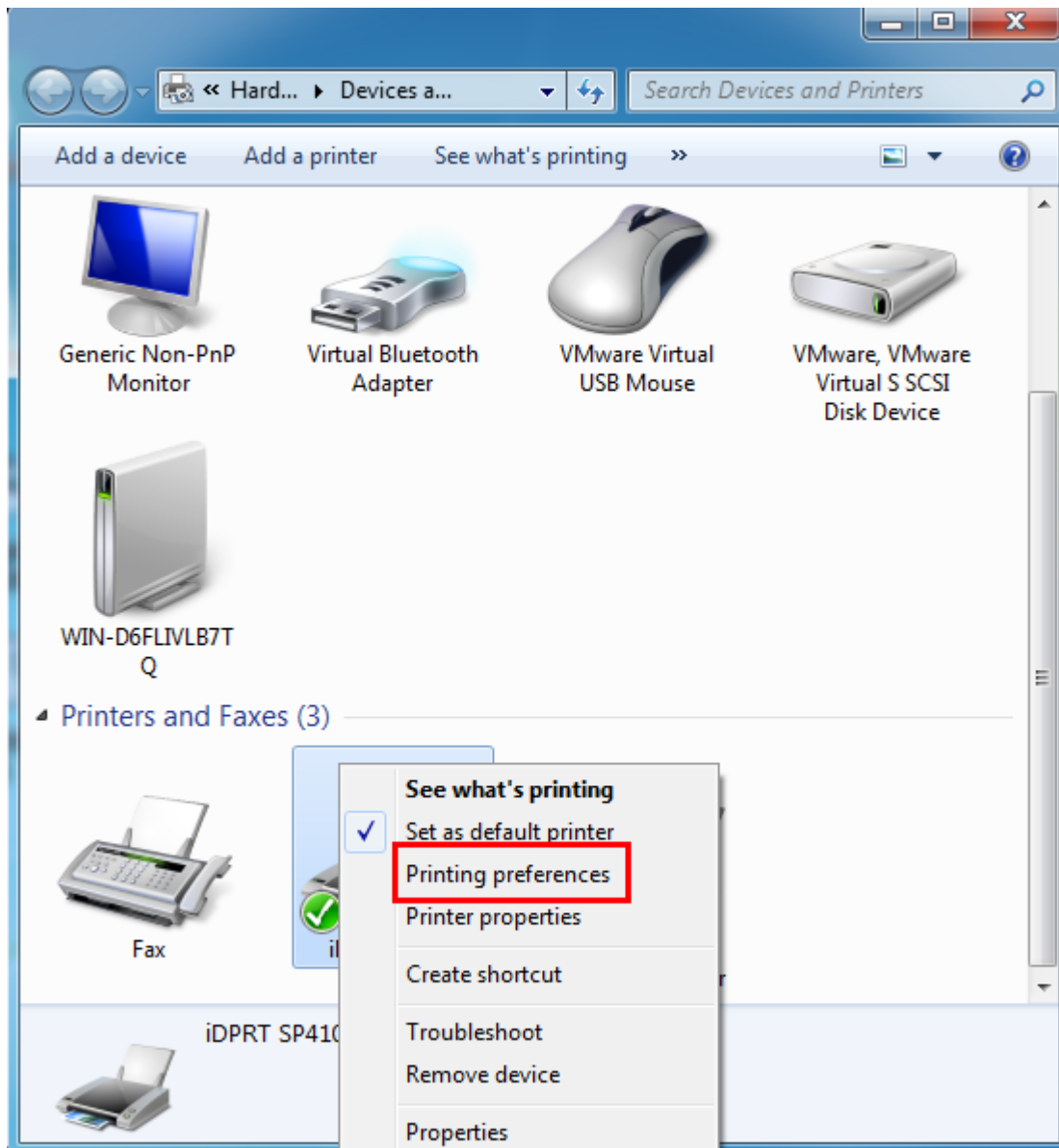
Note:

- 1. If you have already installed the driver (No matter what kind of ports), it will generate a USB port automatically when connecting the printer to computer.**
- 2. Any problems exist, please use our utility tool in CD.**

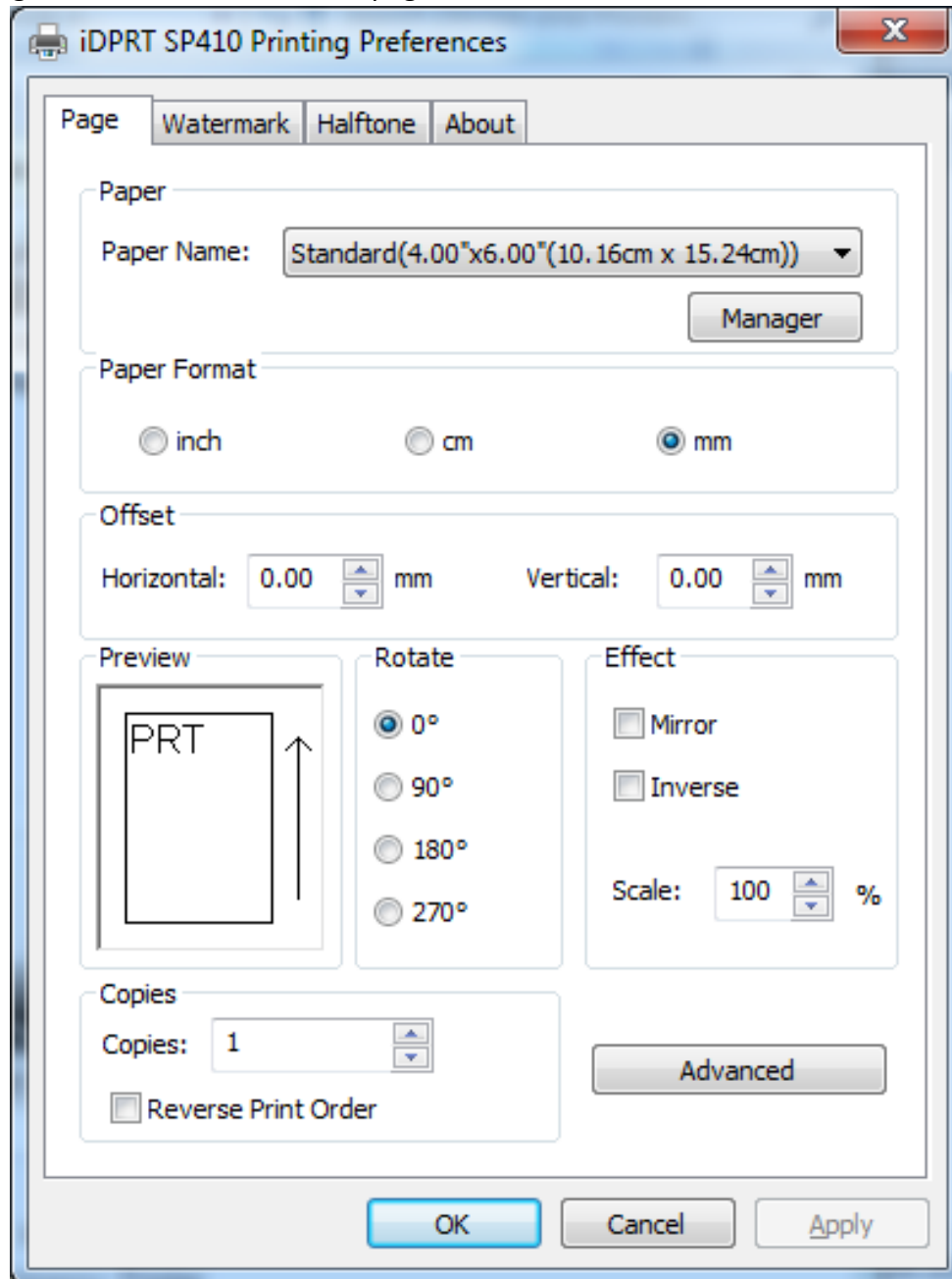
3.3 Usage

3.3.1 Printing Preferences

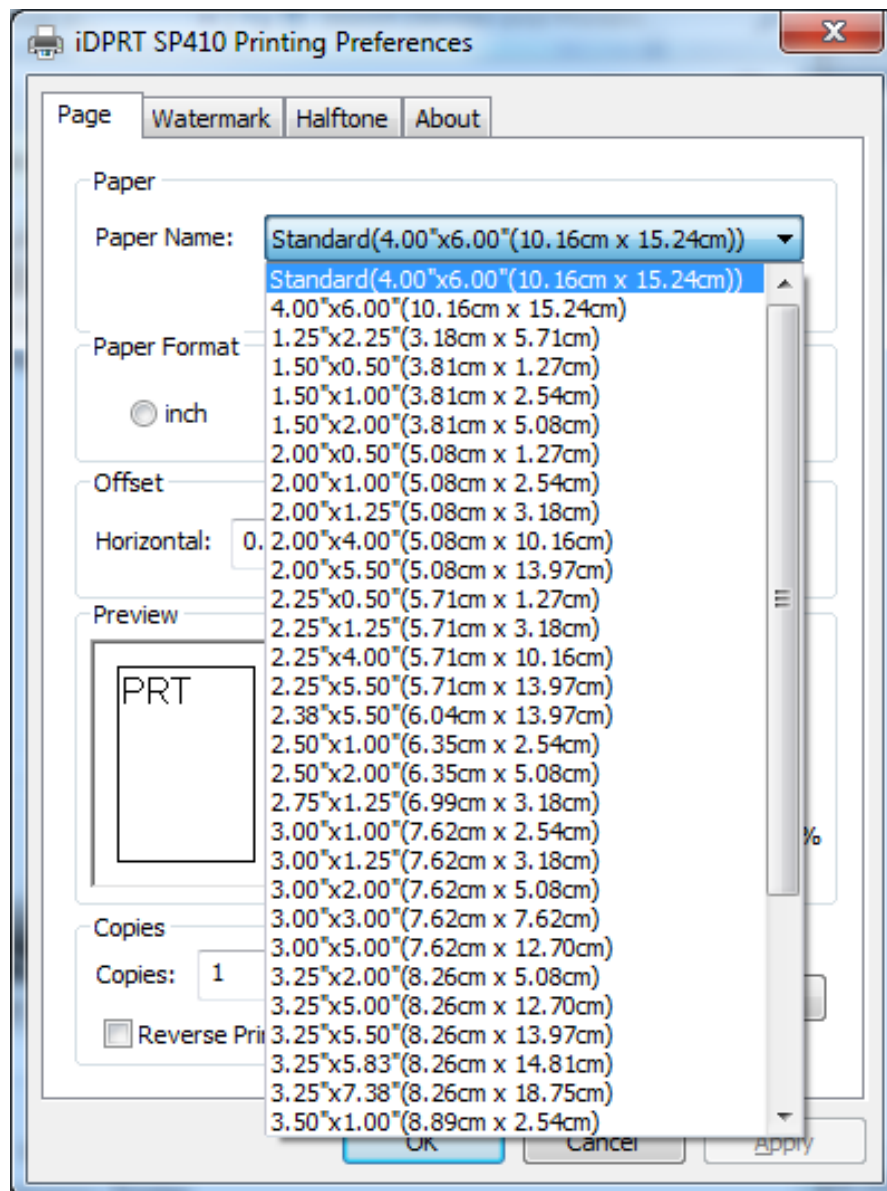
1. Click "Start" → "Devices and Printers". Right click the icon and choose "Printing preferences".



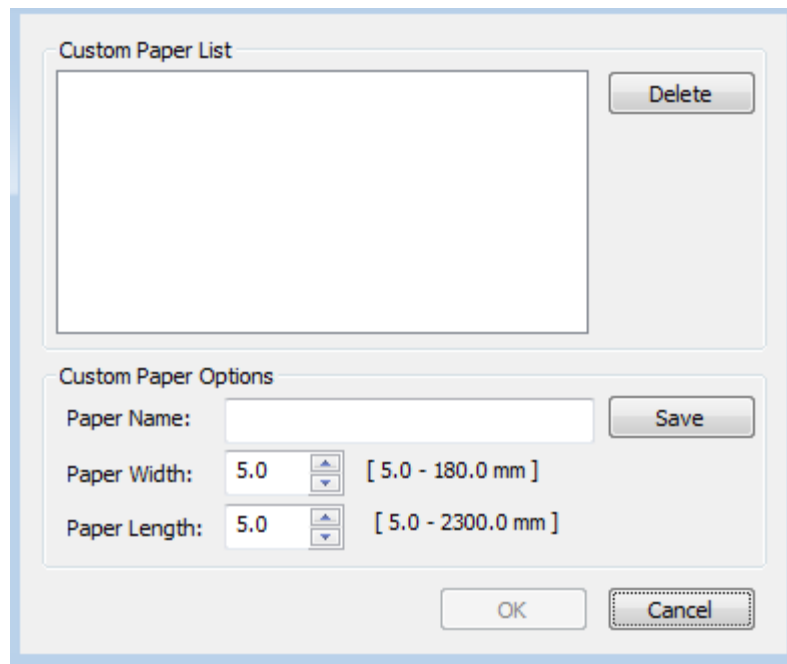
2. According to different needs, set the page.



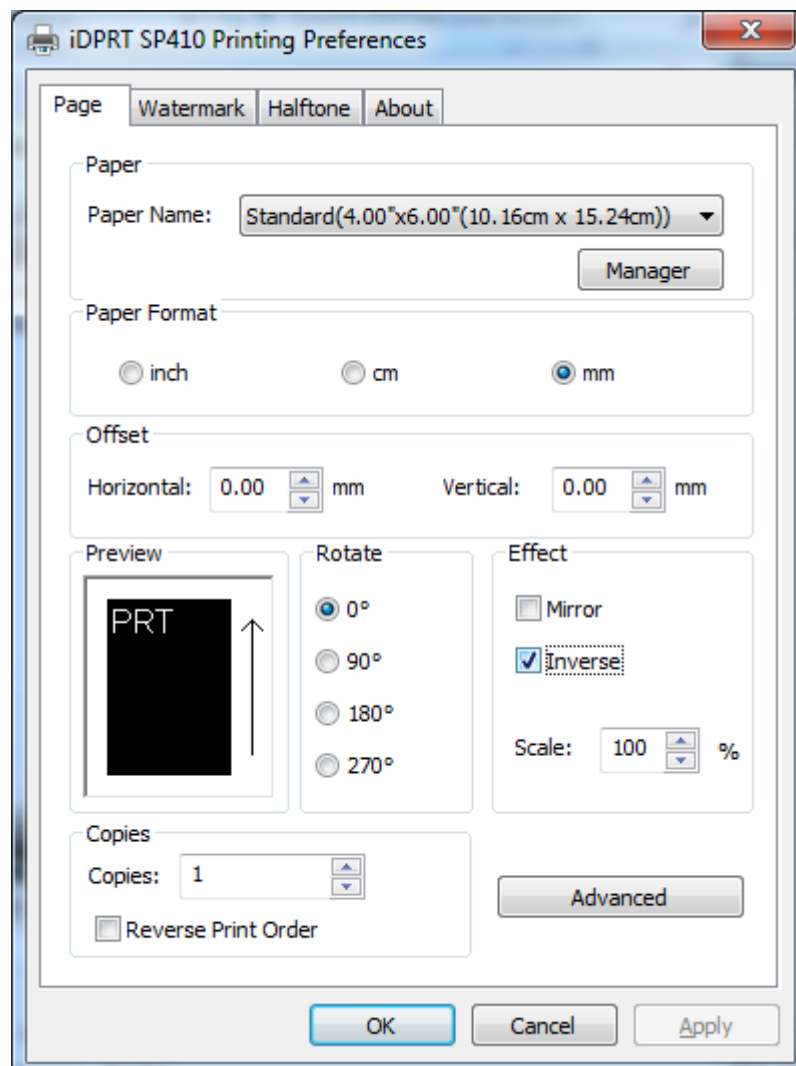
- Click “Paper Name”, then choose the paper type.



- Click “Manager” to add a new stock.

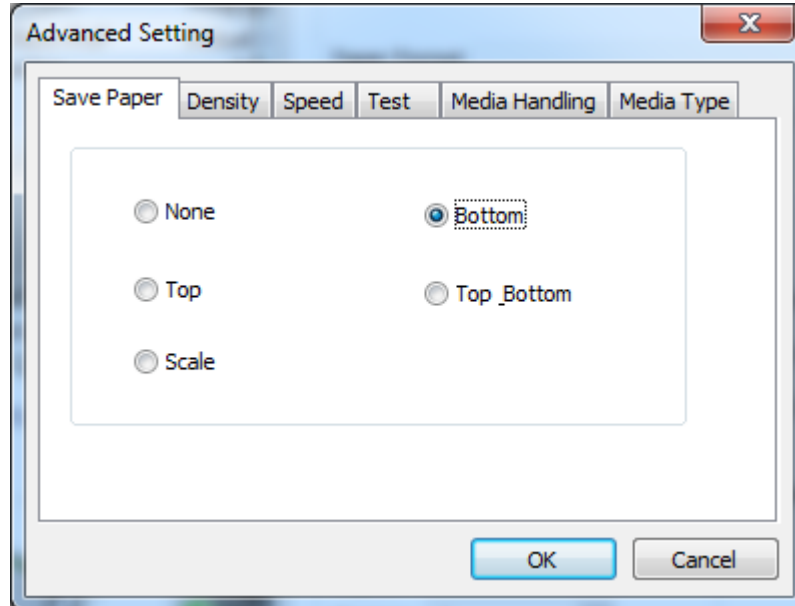


- Choose “Rotate” or “Effect”, it will be showed in the “Preview”.

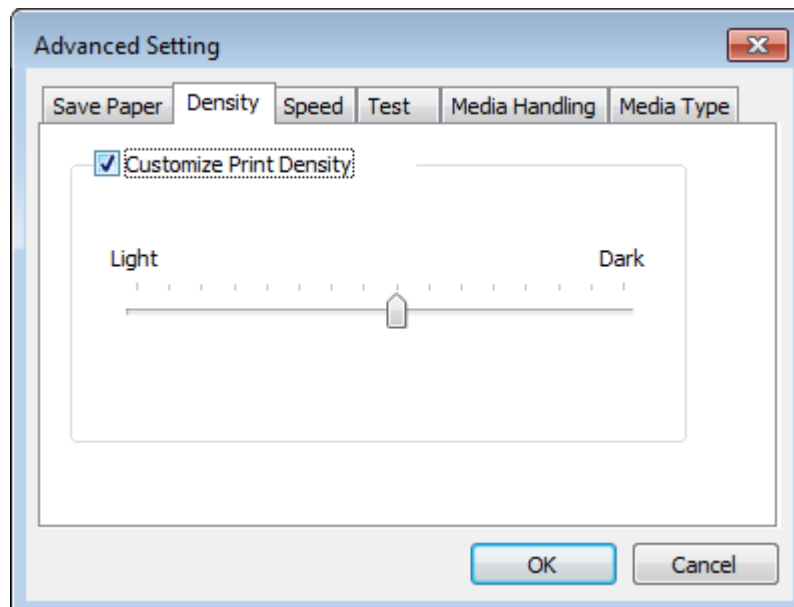


- Click “Advanced” to set “Save Paper”, “Density”, “Speed”, “Test”, “Media Handling”, “Media Type”.

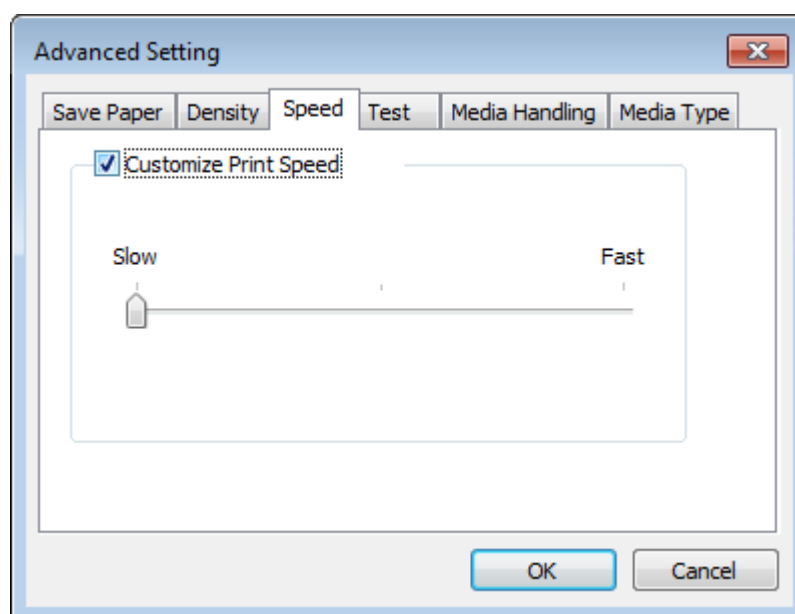
1) Save Paper



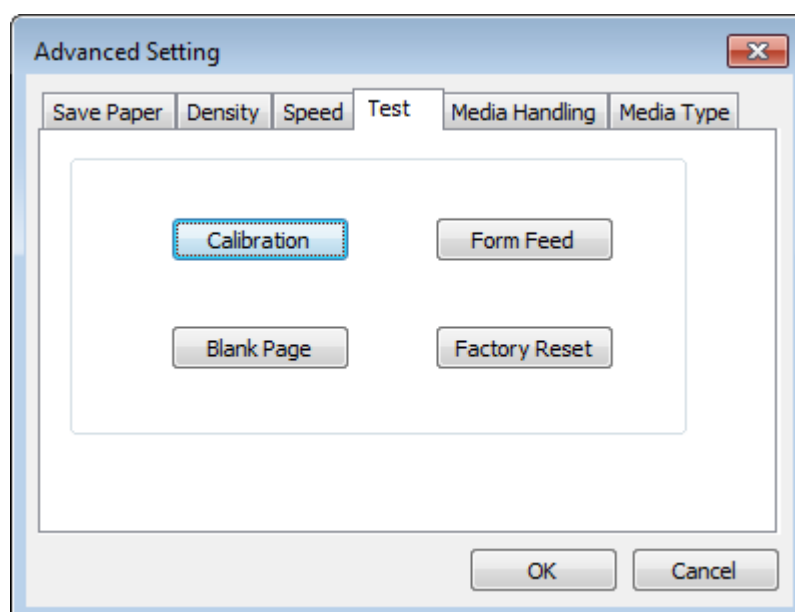
2) Density



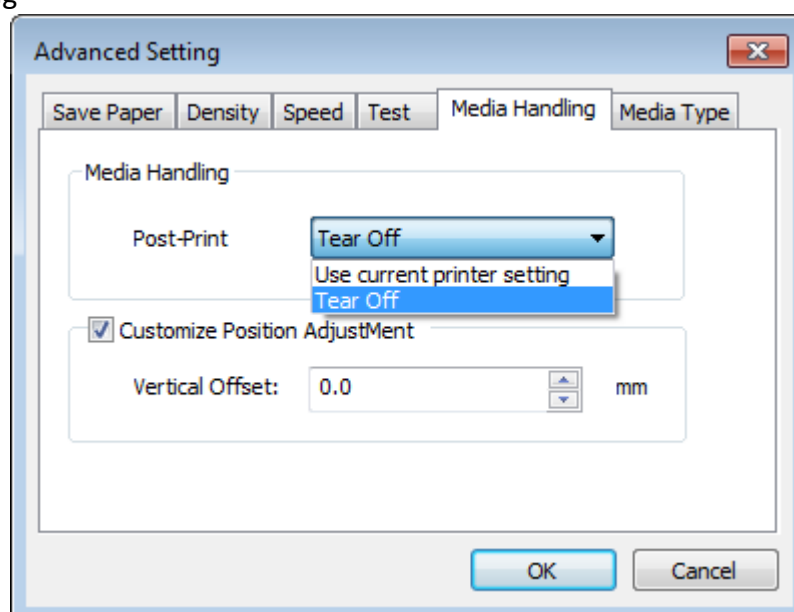
3) Speed



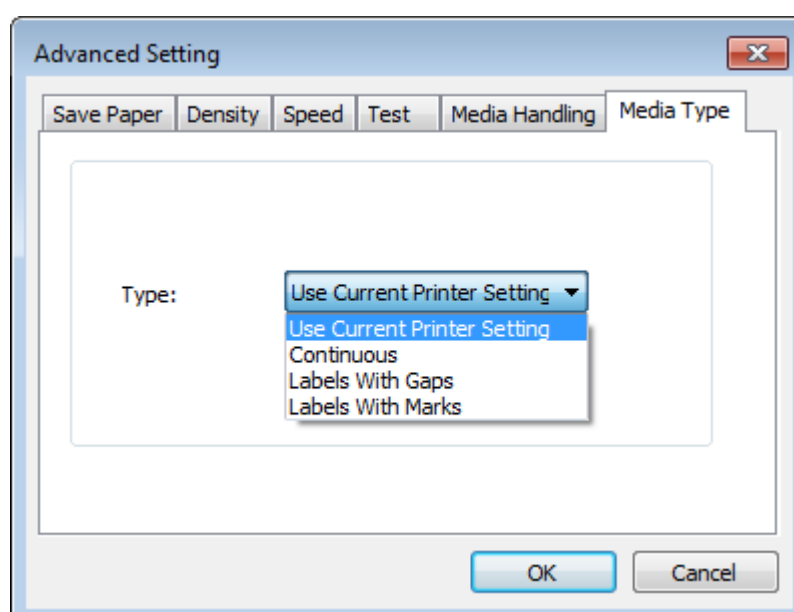
4) Test



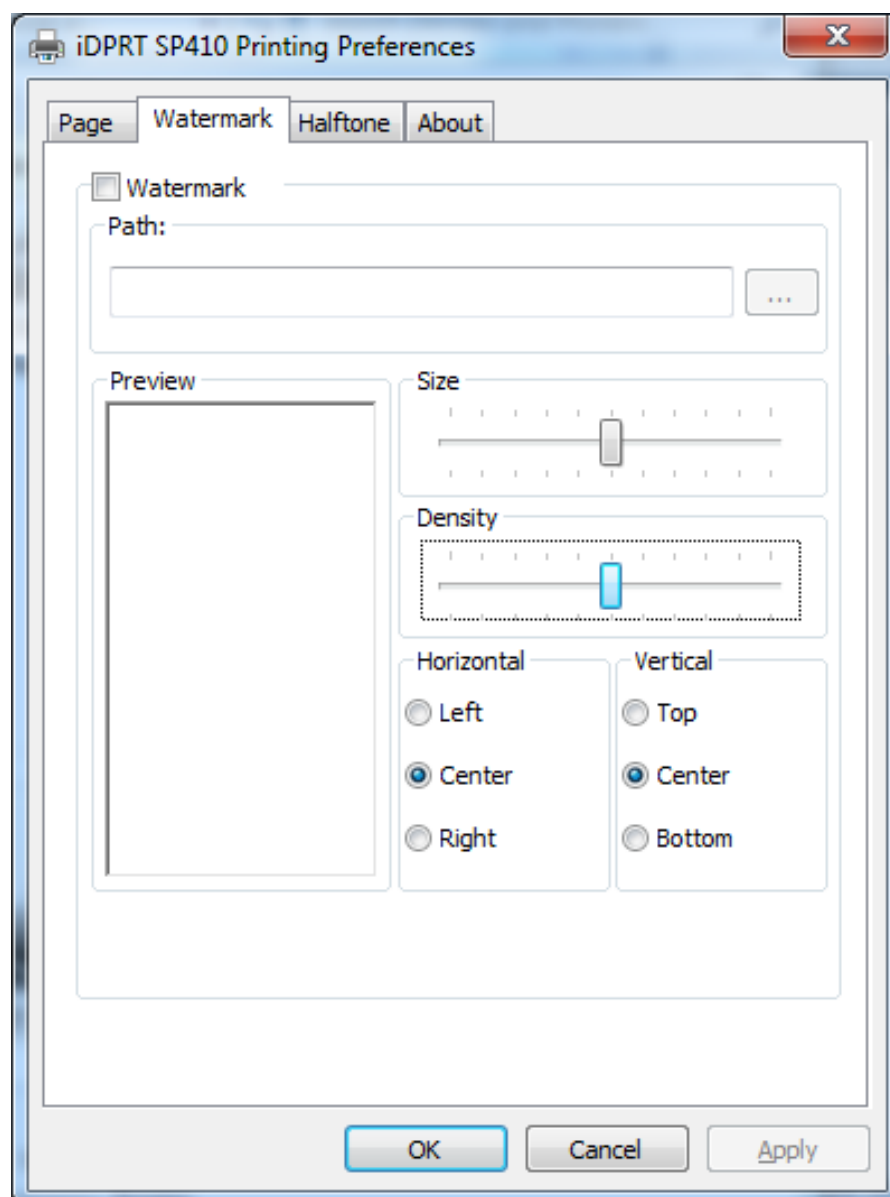
5) Media Handling



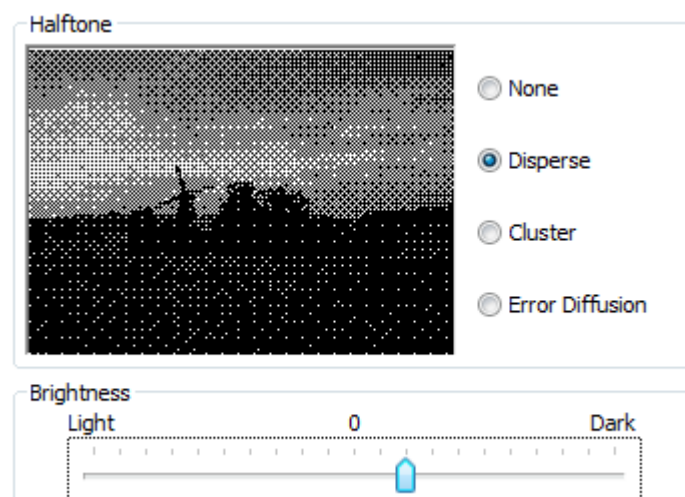
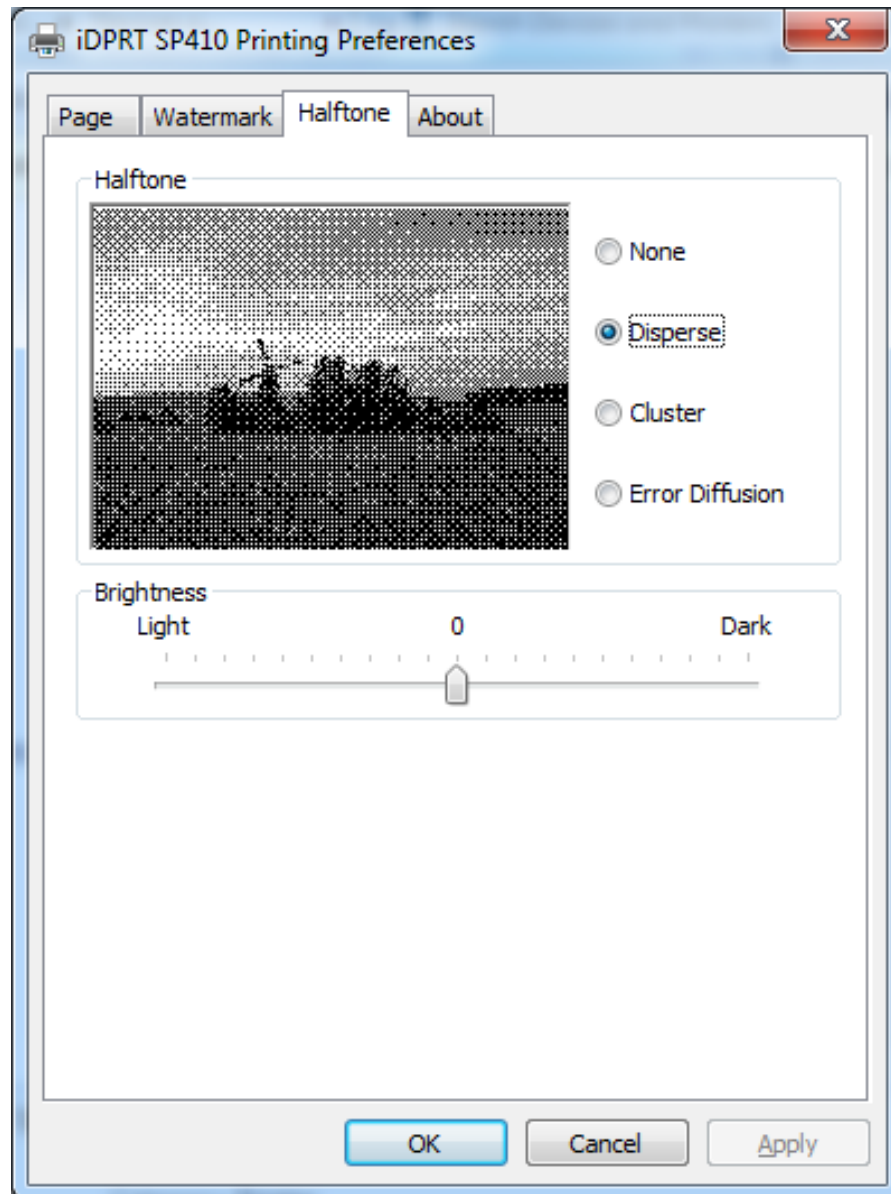
6) Media type



3. Click "Watermark", it recommends to use BMP format.

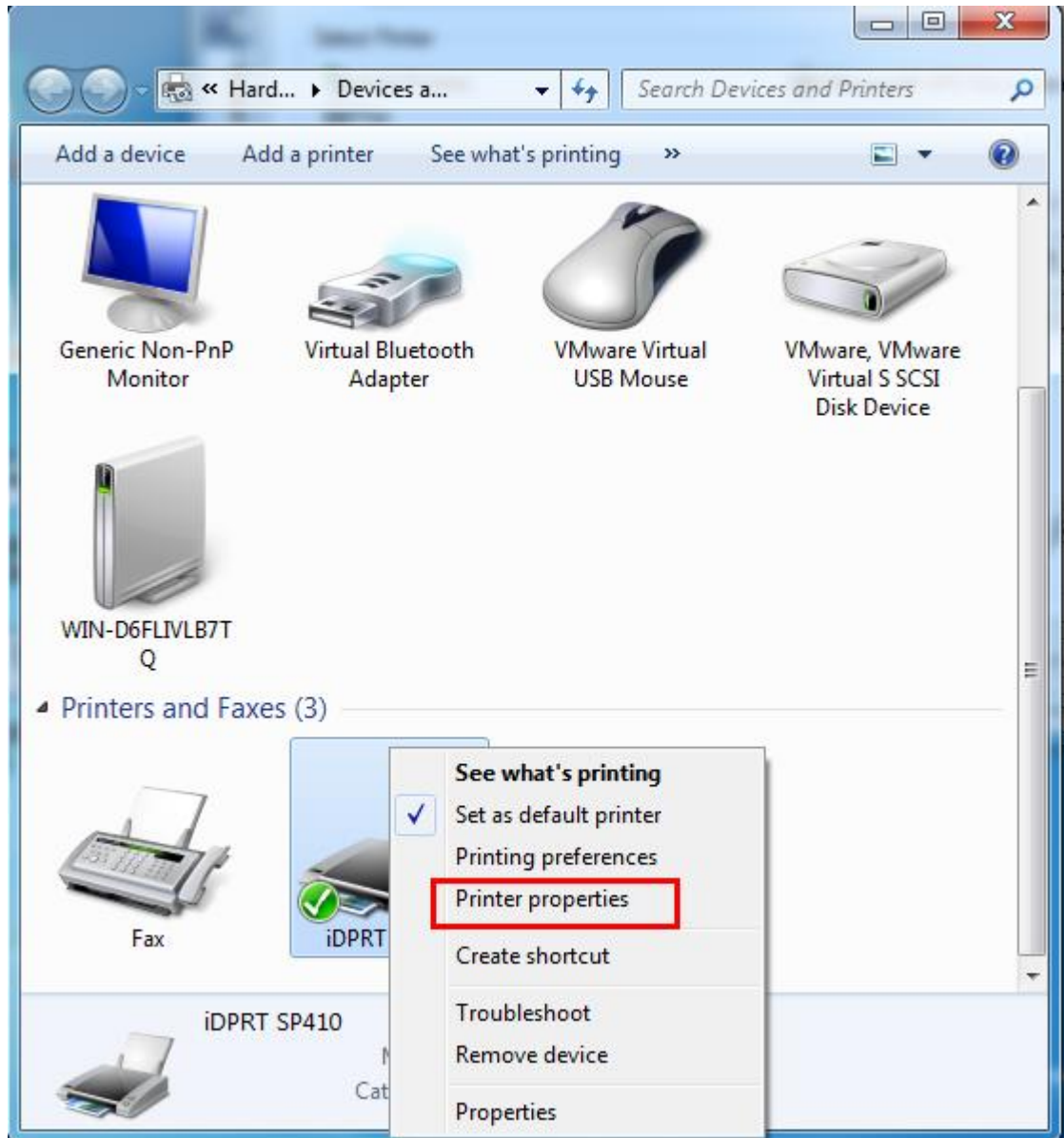


4. Click "Halftone".

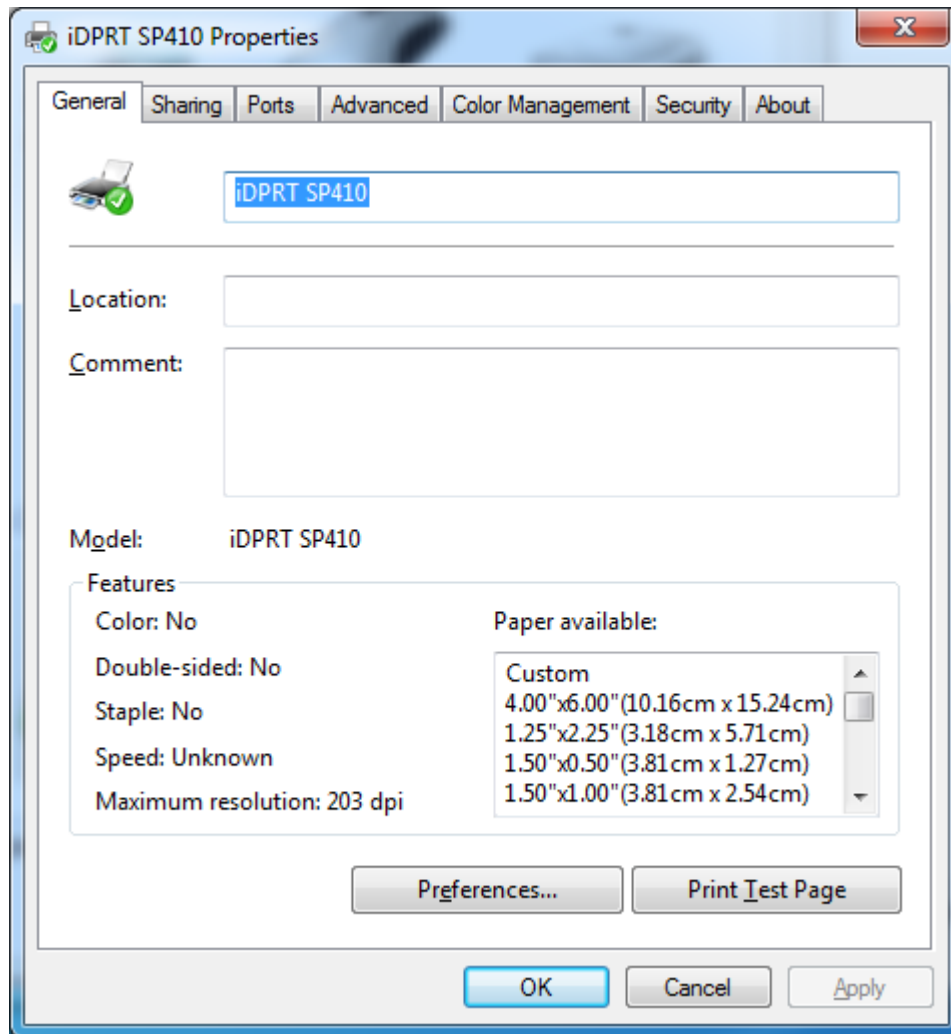


3.3.2 Printer Properties

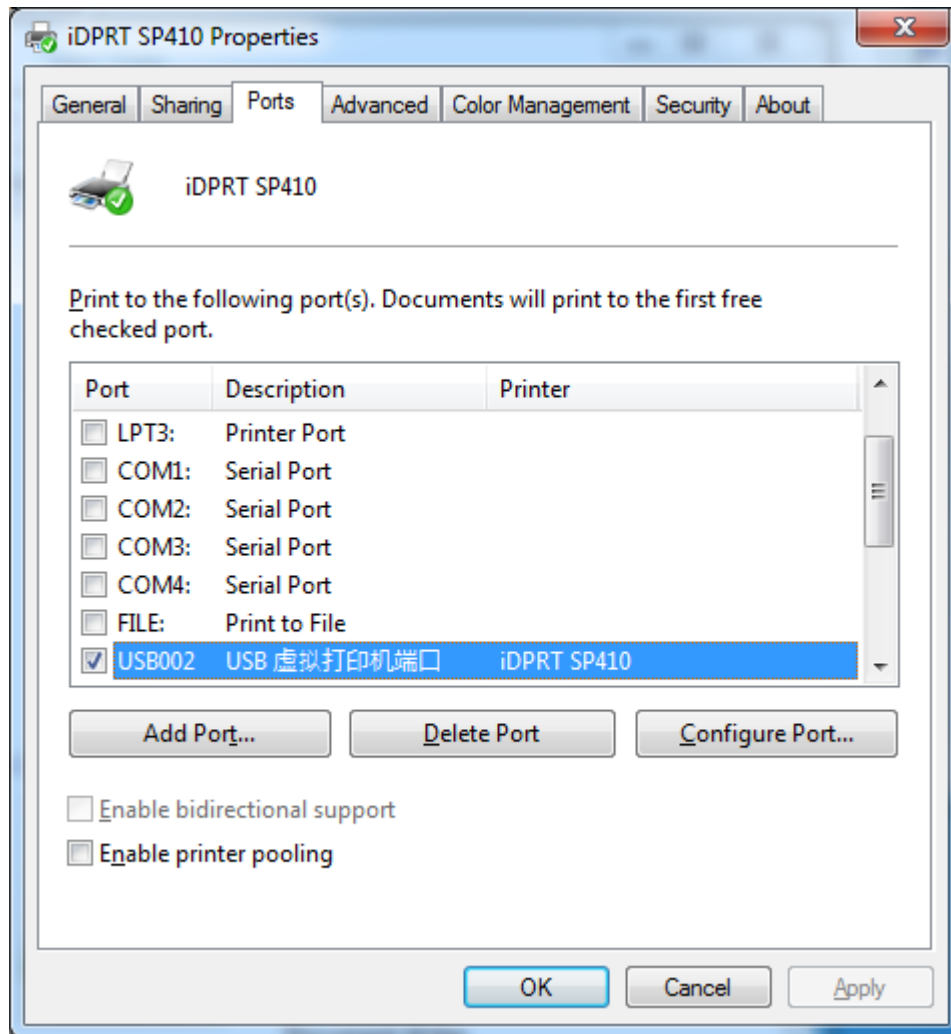
1. Click "Start" → "Devices and Printers". Right click the icon and choose "Printer properties".



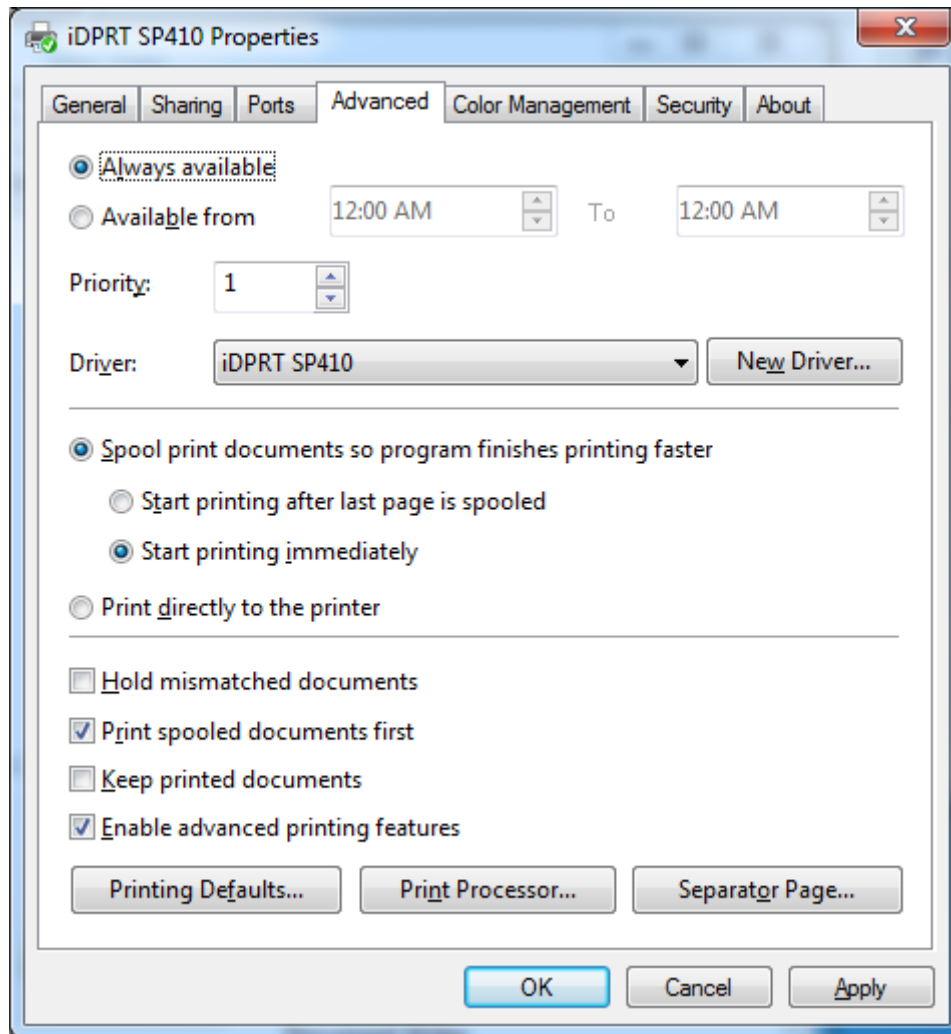
2. Click "General" → "Print Test Page", and printer will print labels with current settings.



3. Click "Ports", then choose the port needed.



4. Click "Advanced" to set the available time for the printer.

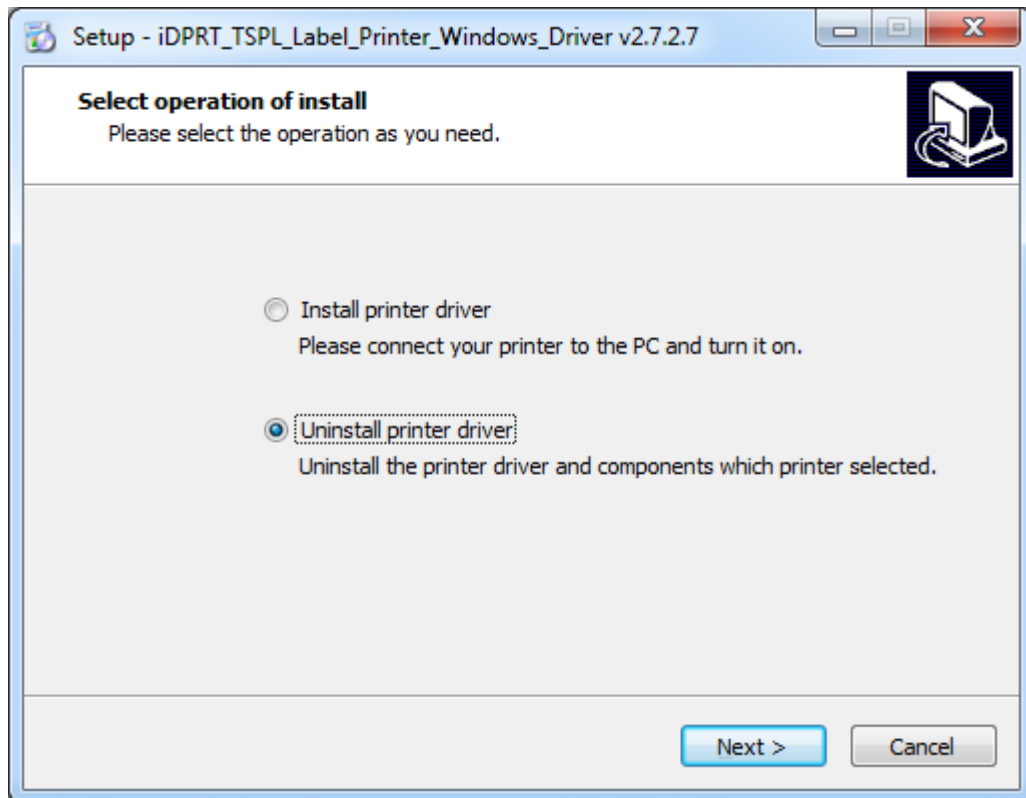


3.4 Removing

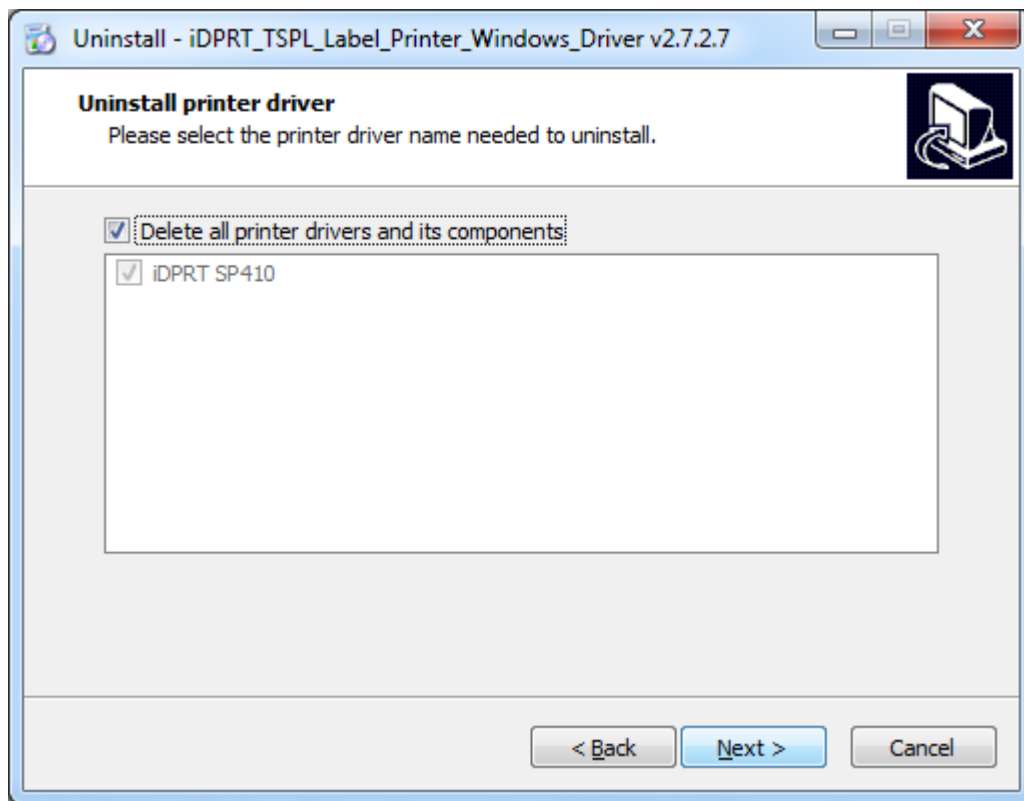


Note: Please turn off the printer or unplug the USB cable before removing the driver.

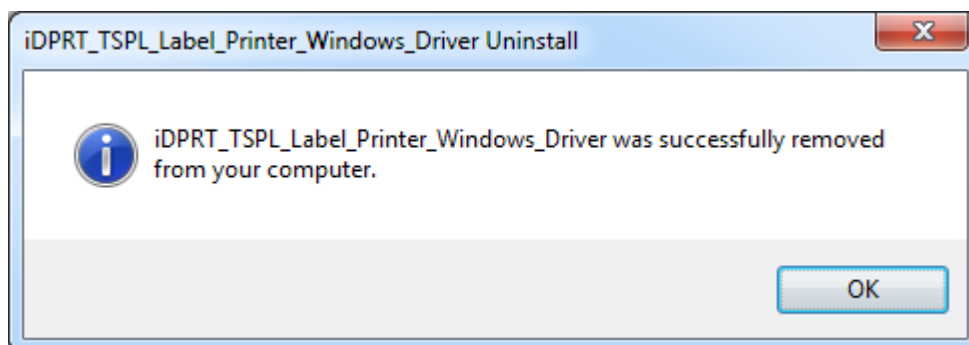
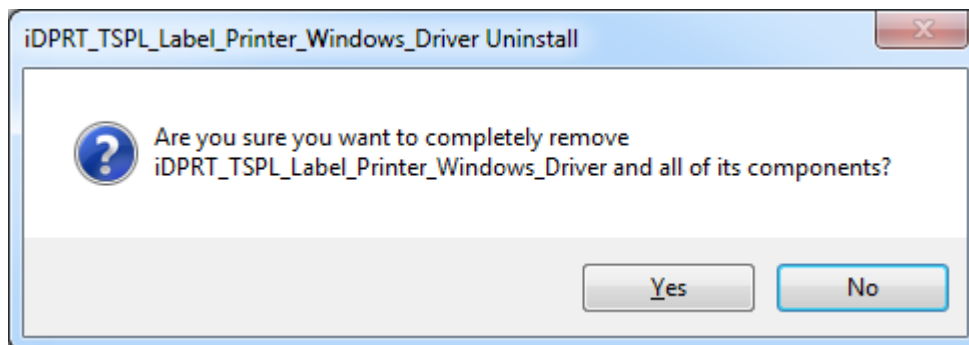
1. Double click Windows Driver.
2. Choose “Uninstall printer driver”, then click “Next”.



3. Choose the printer driver name needed to uninstall, then click "Next".



4. Click "Yes".



CHAPTER 4 MAC DRIVER INSTRUCTION

This Driver Installation Manual provides information on installation in macOS operation system.

4.1 Driver Preparation for macOS

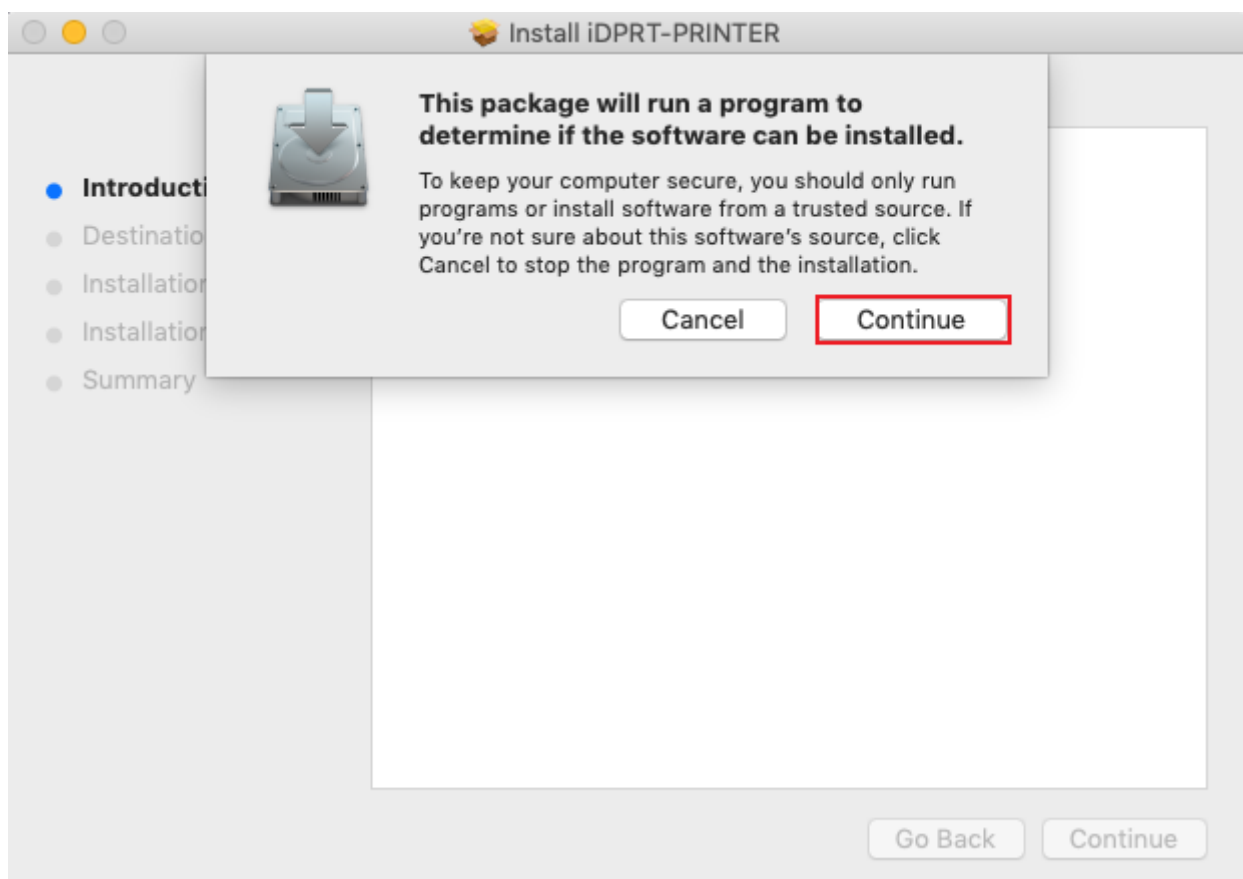
The driver of the installation file name is "iDPRT-SP410-printer-driver-v1.3.0"

4.2 Driver Installation for macOS

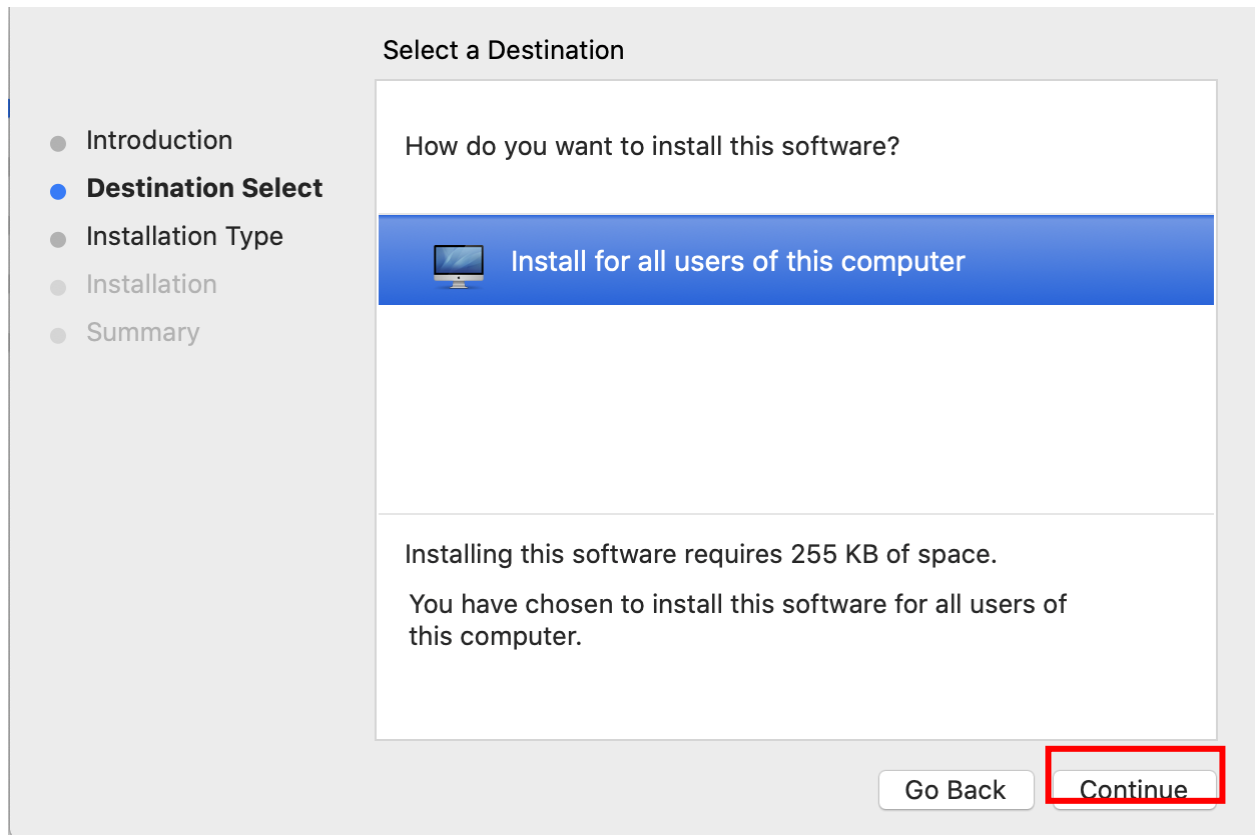


Warning: Under different operating system, the screen has slight difference. Please operate it according to the tips. Take SP410 (macOS 10.15) as example.

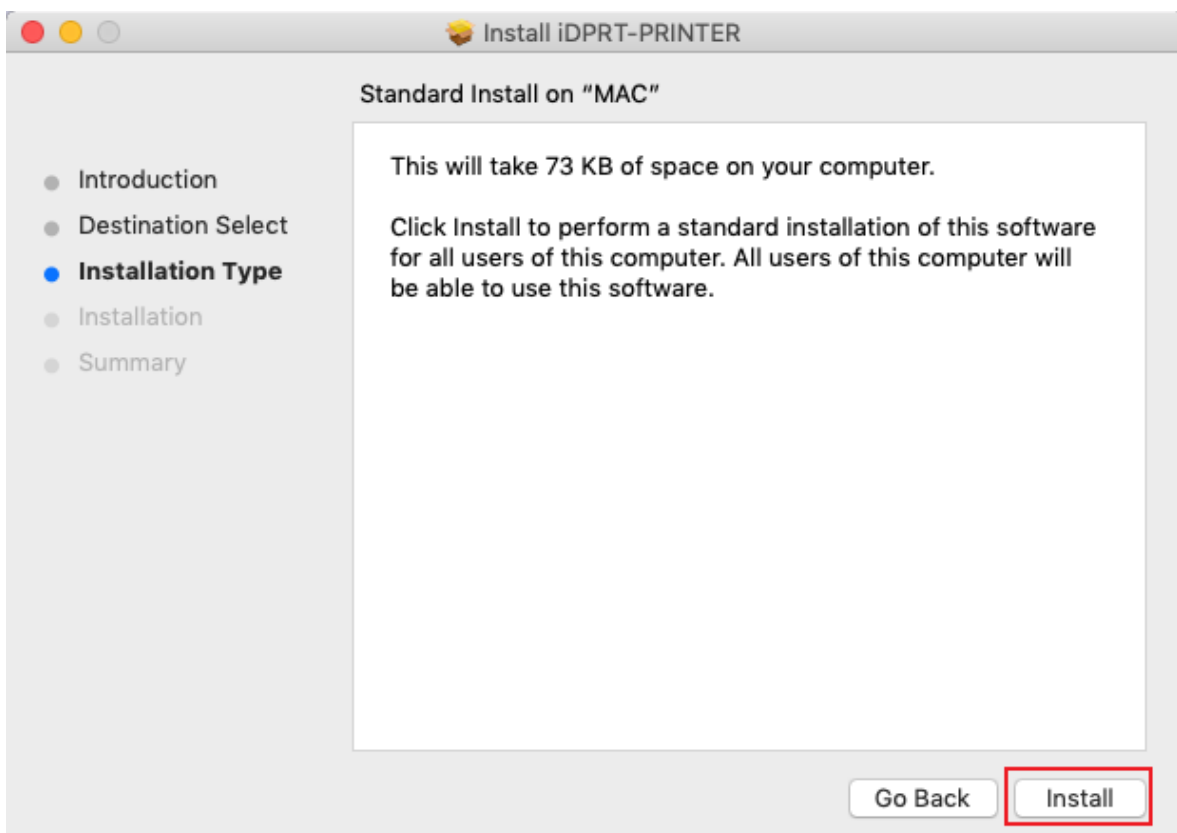
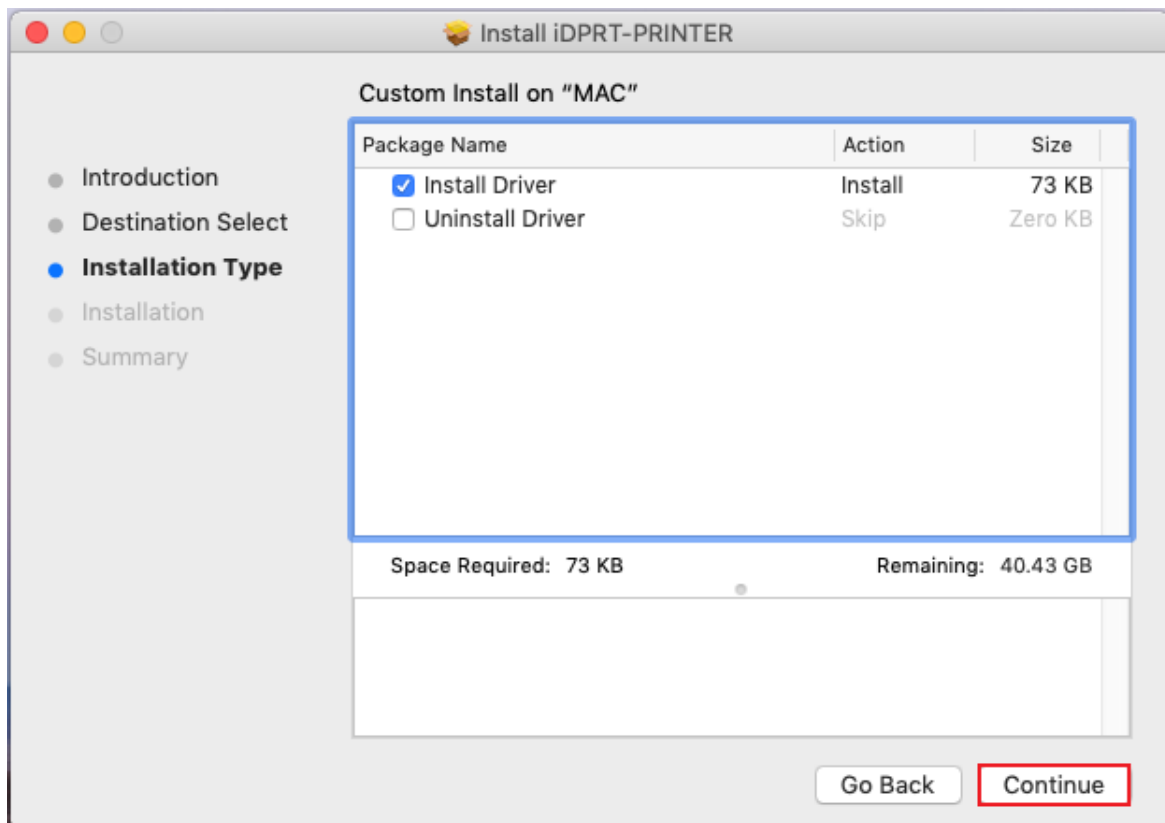
1. Double click the Driver, click "Continue".



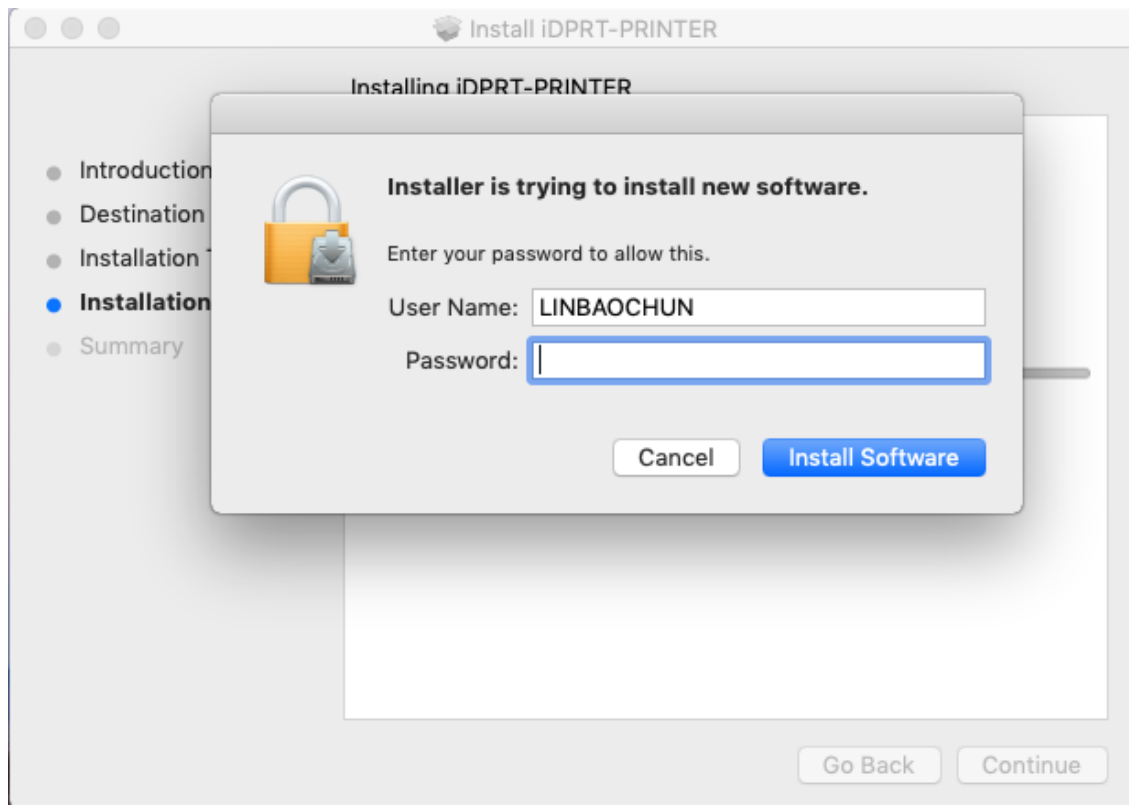
2. Select a destination and click "Continue".



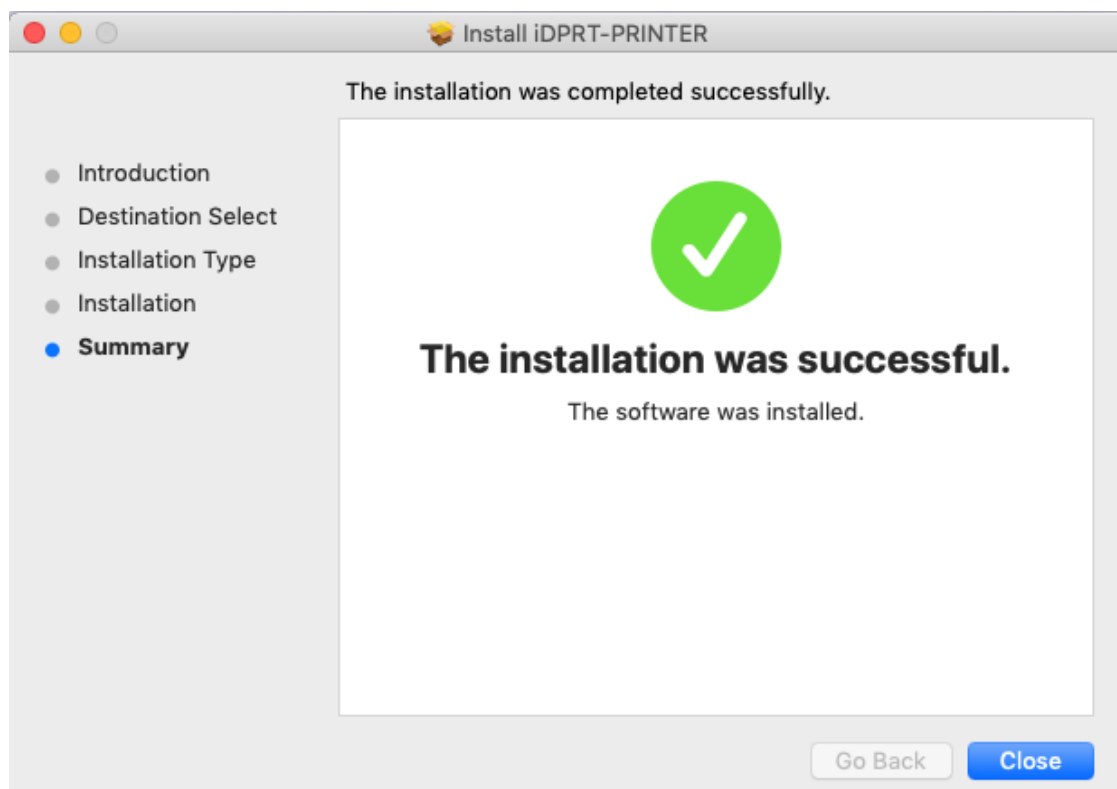
3. Choose "Installation Type" and click "Continue"-> "Install".



4. Type in the password of your computer.



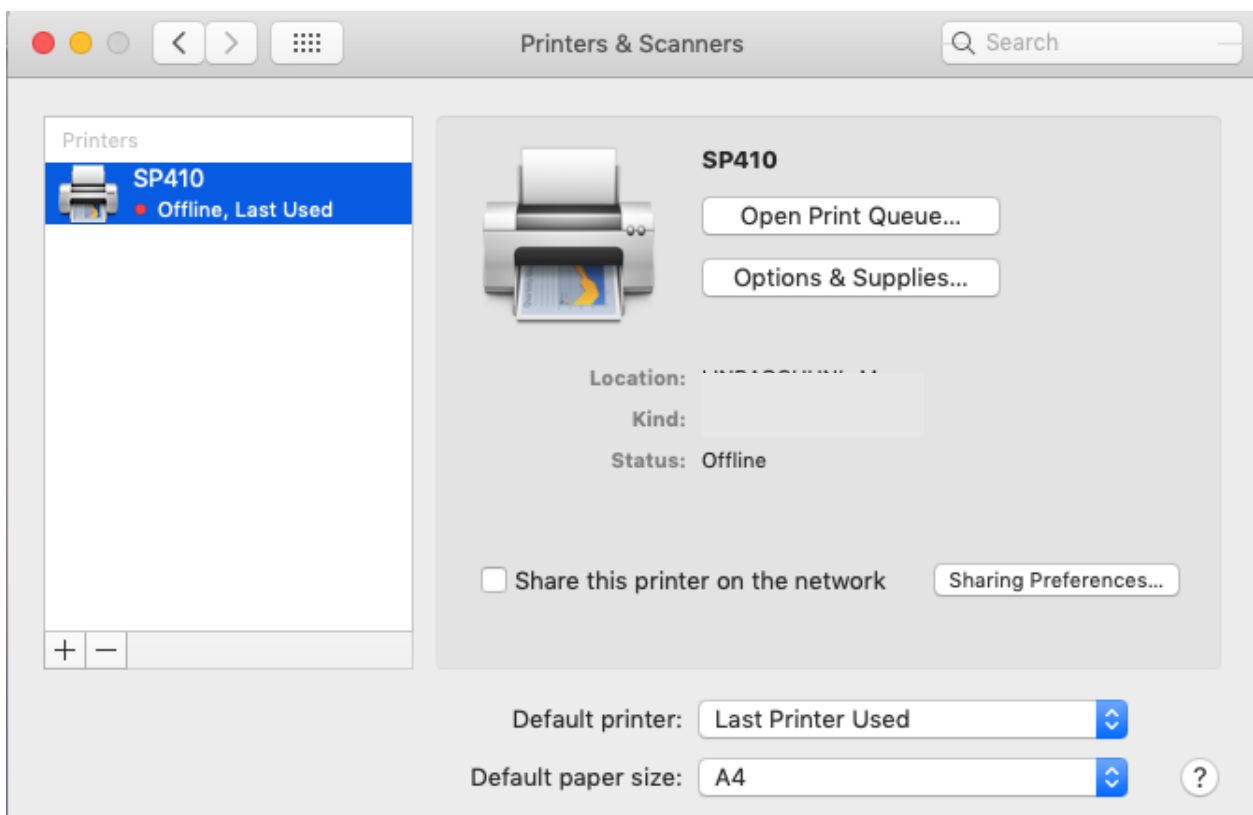
5. The installation was successful.



6. Turn on the printer and connect it to your computer (for example: via USB cable)
7. Click: Launchpad -> System Preferences -> Printers & Scanners.



8. Under "Printer & Scanner", printer SP410 is available.



Xiamen Hanin Electronic Technology Co., Ltd.

ADD: 5F, 8#, Aide Airport Industrial Park, Huli District, Xiamen, China

Web: www.idprt.com